

## Case Study

# Papillion Road Project Papillion, Nebraska

### Issues

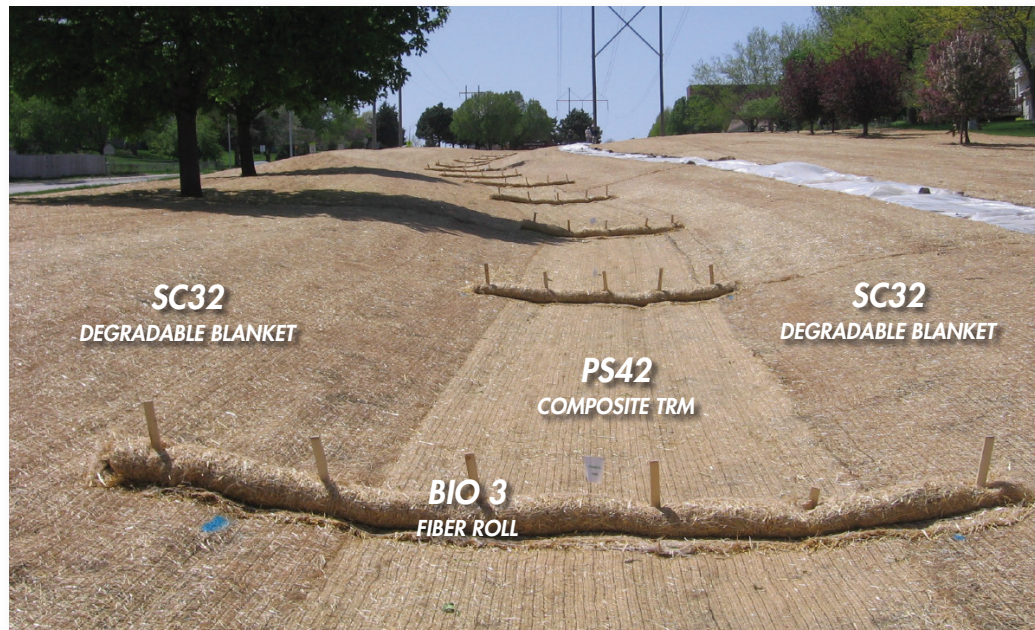
- Quick Vegetation Required.
- Natural tan color for TRM required.
- Significant rain events.

### Problem

This City park project was a re-channelization of a drain-age swale designed by Thompson Dreesen & Dorner, Inc, of Omaha, NE. The channel was needed to mitigate an existing road side ditch that the Corps of Engineers claimed as a jurisdictional waterway.

### Solution

PS 42 TRM and SC32 degradable erosion blanket were installed in June. Before much vegetation was established this project quickly received 3 intense rain events over 2 inches of rain each. Fully vegetating is a mere 4 weeks, this project took some of the most intense rain events in an abnormally wet year.



BIOTICEARTH.COM • PHONE: (866) 280-7327 • FAX: (866) 757-7327

*Case Study*

# Papillion Road Project

## Papillion, Nebraska



### **Results**

Fully vegetating is a mere 4 weeks, this project took some of the most intense rain events in an abnormally wet year.



**ECBVERDYOL**

BIOTICEARTH.COM • PHONE: (866) 280-7327 • FAX: (866) 757-7327